

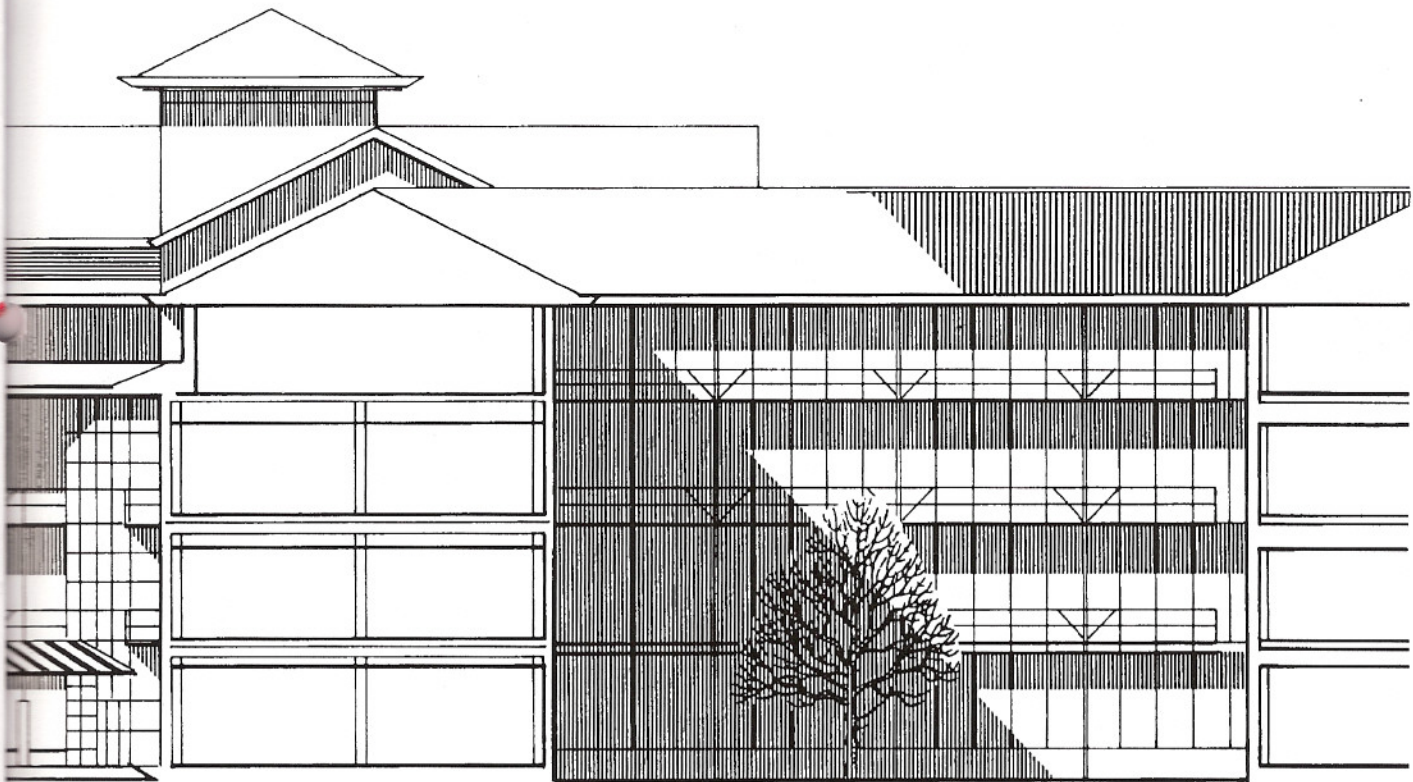
**23 February 2005 No. 6040**



**Application Numbers: GB 0500616.8 - GB 0501152.3**

**Publication Numbers: GB 2405070 - GB 2405304**

# **The Patents & Designs Journal**



**INVESTOR IN PEOPLE**

**An Executive Agency of the Department of Trade and Industry**

## European Patents granted - cont

EP1171722	EP01909530.6	NOT ENGLISH	EP1192099	EP00927639.5	NOT ENGLISH
Vibracoustic GmbH & Co. KG			Ray Technology Group B.V.		
EP1174521	EP01116674.1		EP1193402	EP01308026.2	
TOSOH CORPORATION			RENISHAW plc		
EP1175224	EP00928604.8		EP1194283	EP00951615.4	NOT ENGLISH
SCHERING CORPORATION			ESSILOR INTERNATIONAL (COMPAGNIE GENERALE D'OPTIQUE)		
EP1176180	EP01402003.6		EP1194324	EP01962554.0	NOT ENGLISH
ILLINOIS TOOL WORKS INC.			WANZL METALLWARENFABRIK GMBH		
EP1177177	EP00930341.3		EP1194328	EP00929320.0	
NEUROGEN CORPORATION			Drachmann, Florian M		
EP1177235	EP00931229.9		EP1196769	EP00950726.0	
SHELL INTERNATIONALE RESEARCH MAATSCHAPPIJ B.V.			Applera Corporation		
EP1177975	EP01118334.0	NOT ENGLISH	EP1197058	EP00953250.8	NOT ENGLISH
Eurocopter Deutschland GmbH			Eads Telecom		
EP1178206	EP00116490.4		EP1197153	EP02075153.3	
Koyama, Motonari Koyama, Kumiko			Unilever Plc		
EP1179630	EP01116022.3	NOT ENGLISH	EP1198799	EP00927161.0	NOT ENGLISH
Voith Paper Patent GmbH			Bayer Aktiengesellschaft		
EP1180187	EP00929575.9		EP1200008	EP00956308.1	NOT ENGLISH
Teräspeikko Oy			WAHL GmbH		
EP1183003	EP00936700.4	NOT ENGLISH	EP1200269	EP00947691.2	
Henkel Kommanditgesellschaft auf Aktien			Cortec Ood		
EP1185781	EP00925237.0	NOT ENGLISH	EP1200303	EP00942309.6	NOT ENGLISH
DaimlerChrysler AG			STROJCAD S.R.O.		
EP1187761	EP00964891.6		EP1202635	EP00956239.8	
ORCON CORPORATION			Unilever Plc		
EP1187853	EP00931517.7		EP1204173	EP01126129.4	
Yissum Research Development Company of the Hebrew University of Jerusalem			AUTONETWORKS TECHNOLOGIES, LTD. SUMITOMO WIRING SYSTEMS, Ltd. SUMITOMO ELECTRIC INDUSTRIES, LTD.		
EP1189342	EP01118174.0	NOT ENGLISH	EP1204979	EP00953668.1	
Kathrein-Werke KG			E.I. DU PONT DE NEMOURS AND COMPANY		
EP1190906	EP01115534.8	NOT ENGLISH	EP1205251	EP01309506.2	
Thule GmbH & Co. KG			Rachels, David L Kersey, Joshua W R		
EP1191011	EP01121345.1	NOT ENGLISH	EP1205597	EP01203823.8	
DHW Deutsche Hydrierwerke GmbH Rodleben			KVAERNER PULPING AB		